



A Brief Company Profile of SamChunDang Pharm. Co., Ltd.



Company Overview

Company Overview

- ❖ **Founded** : in 1943
- ❖ **Join to Sowha Group** : in 1986
- ❖ **Initial Public Offering** : in 2000
- ❖ **Number of Employee** : 379 Employees
- ❖ **Line of Business** : Manufacture, Distribution,
Import and Export of Pharmaceuticals
- ❖ **Head Office** : 351, Hyoryeong-ro, Seocho-gu,
Seoul, 06643, Korea
- ❖ **Manufacturing Facilities** : 1. HyangNam Pharmaceutical Industries Complex
71, Jeyakgongdan 2-gil, Hyangnam-eup,
Hwaseong-si, Gyeonggi-do, 18622, Korea

2. 50, Osongsaengmyeong-6-ro Osong-eub,
Heungduk-gu Cheongju-si, Chungcheongbuk-do,
28158, Korea
- ❖ **R&D Center** : 3rd & 9th Floor, GyeonGI Bio Center
147, Gwanggyo-ro, Youngtong-gu,
Suwon-si, Gyeonggi-do, 16229, Korea
- ❖ **Web Site** : www.scd.co.kr

Head Office



Affiliated Foundation & Companies

Affiliated Foundation: ILSONG

❖ SoWha Group : Affiliated Companies

❖ Educational Foundation

- Hallym SungSim College (*Established in 1939*)
- Hallym University (*Established in 1982*)

❖ Medical Centers

- HanGang SungSim Hospital (*Established in 1971*)
- KangNam SungSim Hospital (*Established in 1980*)
- ChunChon SungSim Hospital (*Established in 1984*)
- KangDong SungSim Hospital (*Established in 1986*)
- Hallym SungSim Hospital (*Established in 1999*)
- Dongtan SungSim Hospital (*Established in 2012*)

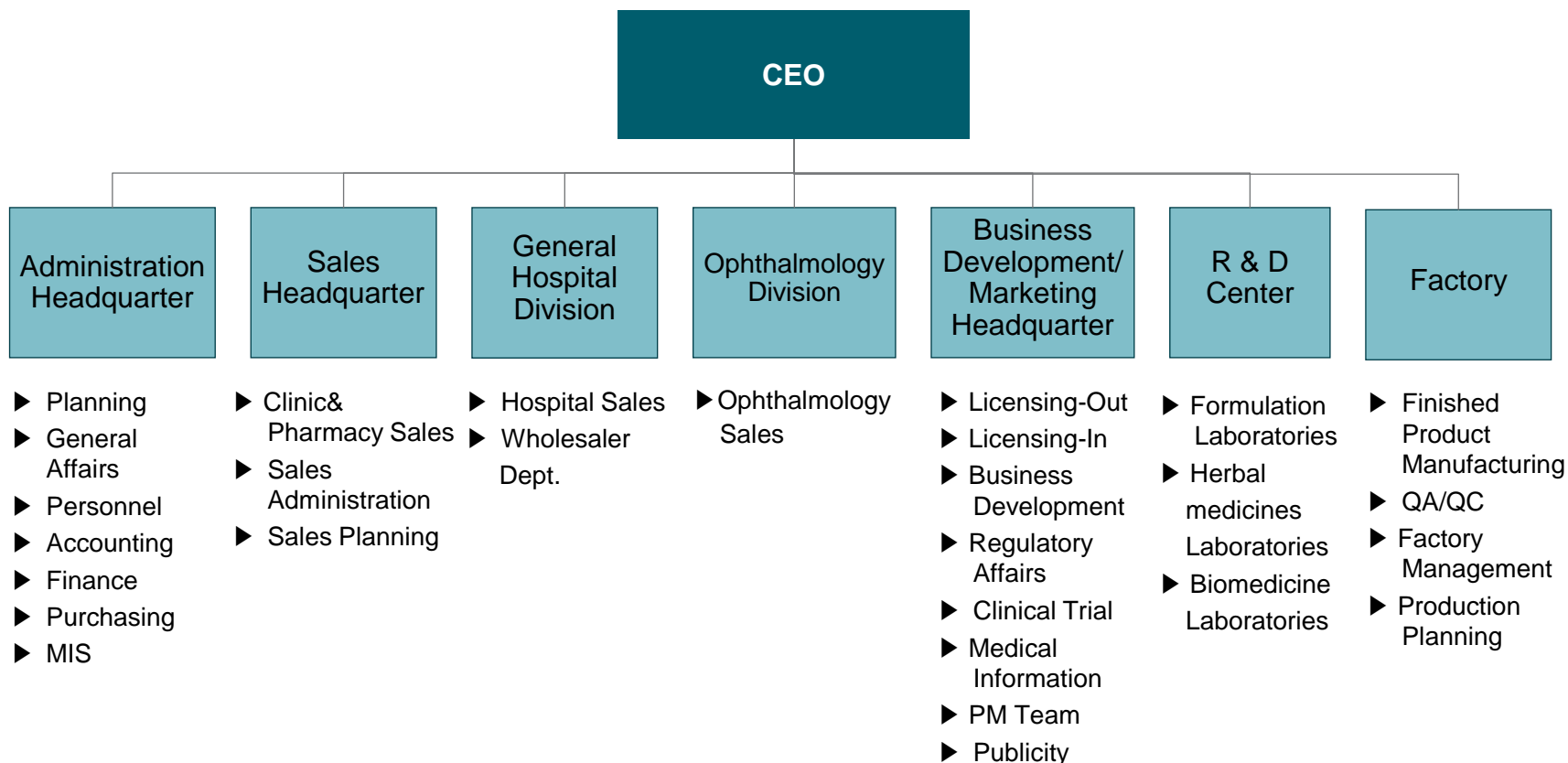


Affiliated Companies: SOWHA

- ❖ SoWha Inc. (Established in 1979)
 - Pharmaceutical Distribution Company
- ❖ **SamChunDang Pharmaceutical Co., Ltd.**
 - Pharmaceutical Company
 - Join to SoWha Group in 1986
- ❖ **DHP Korea Pharmaceutical Co., Ltd.**
 - Pharmaceutical Company for Single dose Eye Drops
 - Join to SoWha Group in 2012
- ❖ SungSim Medical Supply Co., Ltd.(1986)
 - Medical Furniture Supplier
- ❖ HanNong Food System Inc.(1987)
 - Food Supplier
- ❖ Sooln Pharmaceutical Co., Ltd. (1993)
 - Pharmaceutical Distribution Company
- ❖ Sooln Trading Co., Ltd. (1993)
 - Medical Equipment Supplier
- ❖ SoWha Publishing Co. (1993)
 - Publishing Company
- ❖ SoWha Printing Co. (2003)
 - Printing Company

Company Organization

GMP Organization Chart



Manufacturing Facilities

HyangNam Pharmaceutical Valley

- **Ophthalmic Solutions (Multi-dose)**
- Tablets/Capsules
- Nasal Solutions



Osong Bio Valley

- **Ophthalmic Solutions (Mono-dose)**



Specialization in Ophthalmology

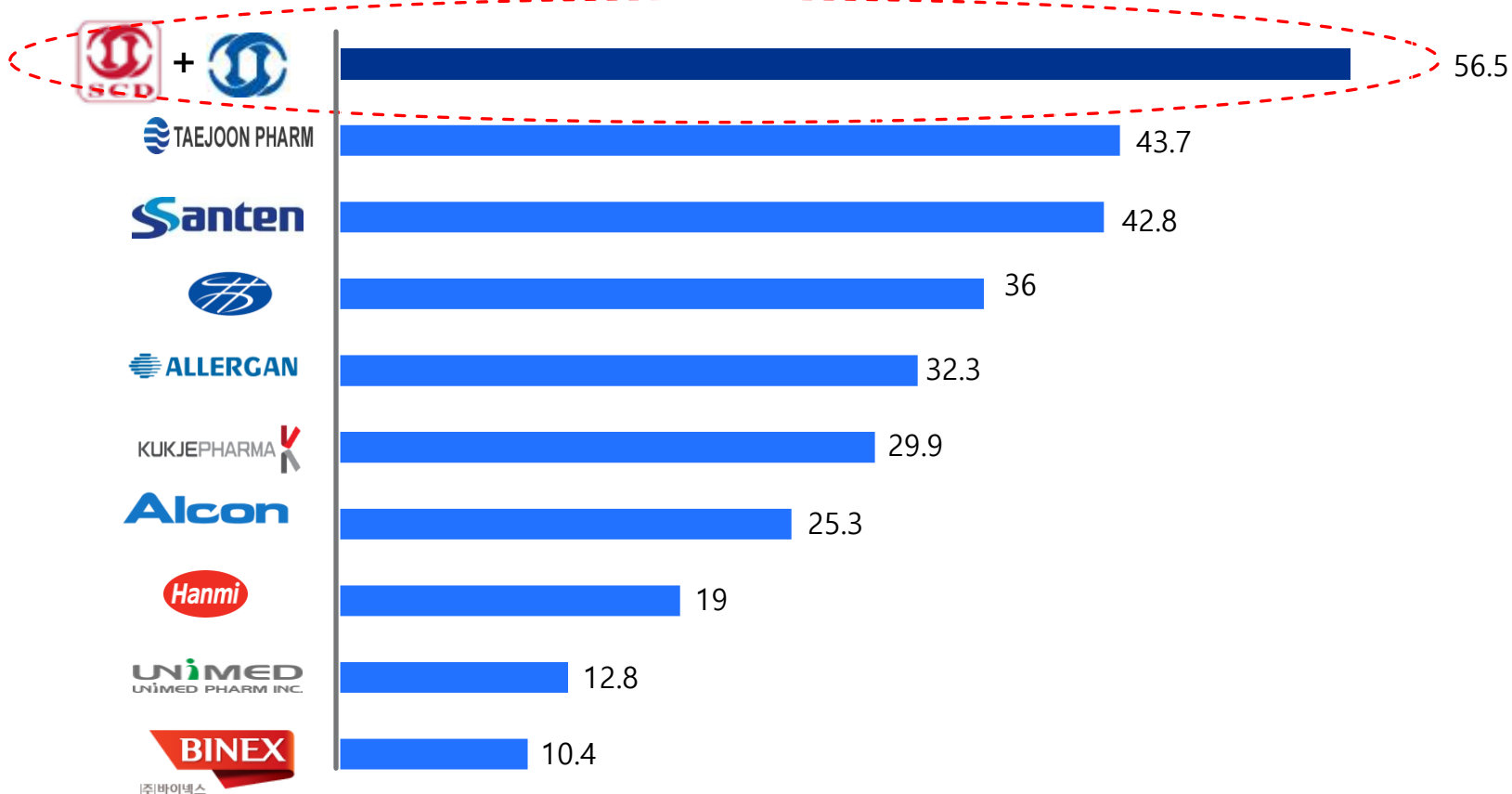


Ophthalmic pharmaceuticals Pipeline

- ❖ Glaucoma
- ❖ Allergy
- ❖ Inflammatory
- ❖ Infection
- ❖ Dry eye syndrome
- ❖ Cataract
- ❖ AMD (Age-related macular degeneration)

#1 Player in Ophthalmology Market

Revenue of Top 10 Companies in Ophthalmology Market, Korea (2016)



*Others: 27% of ophthalmology market (113million)

* Source : Ubist Yearly Data

◆ Value Unit: KRW 1 billion \approx US\$ 1 million

Manufacturing Capacity

Ophthalmic product manufacturing capacity

Multi-dose	No. of lines	Capacity
Current	2 Lines	1.25 million bottles/month 15 million bottles/year
Production Line Upgrade (In 2019)	3 Lines	2.5 million bottles/month 30 million bottles/year
Mono-dose	No. of lines	Capacity
Current	3 Lines (Weiler/USA, Rommelag/Germany)	20 million tubes/month 240 million tubes/year

CERTIFICATE OF GMP COMPLIANCE OF A MANUFACTURER

UK MHRA generated EU GMP Certificate on March 9th, 2015.

Certificate No: UK GMP 43778 Insp GMP 43778/10951938-0001



Medicines and Healthcare products Regulatory Agency

CERTIFICATE OF GMP COMPLIANCE OF A MANUFACTURER

Part 1

Issued following an inspection in accordance with Art. 111(5) of Directive 2001/83/EC.

The competent authority of the United Kingdom confirms the following:

The manufacturer	SAM CHUN DANG PHARM. COMPANY LIMITED
Site address	71 JEYAKGONGDAN 2-GIL HYANGNAM-EUP HWASEONG-SI GYEONGGI-DO KR-445 937 KOREA REPUBLIC OF

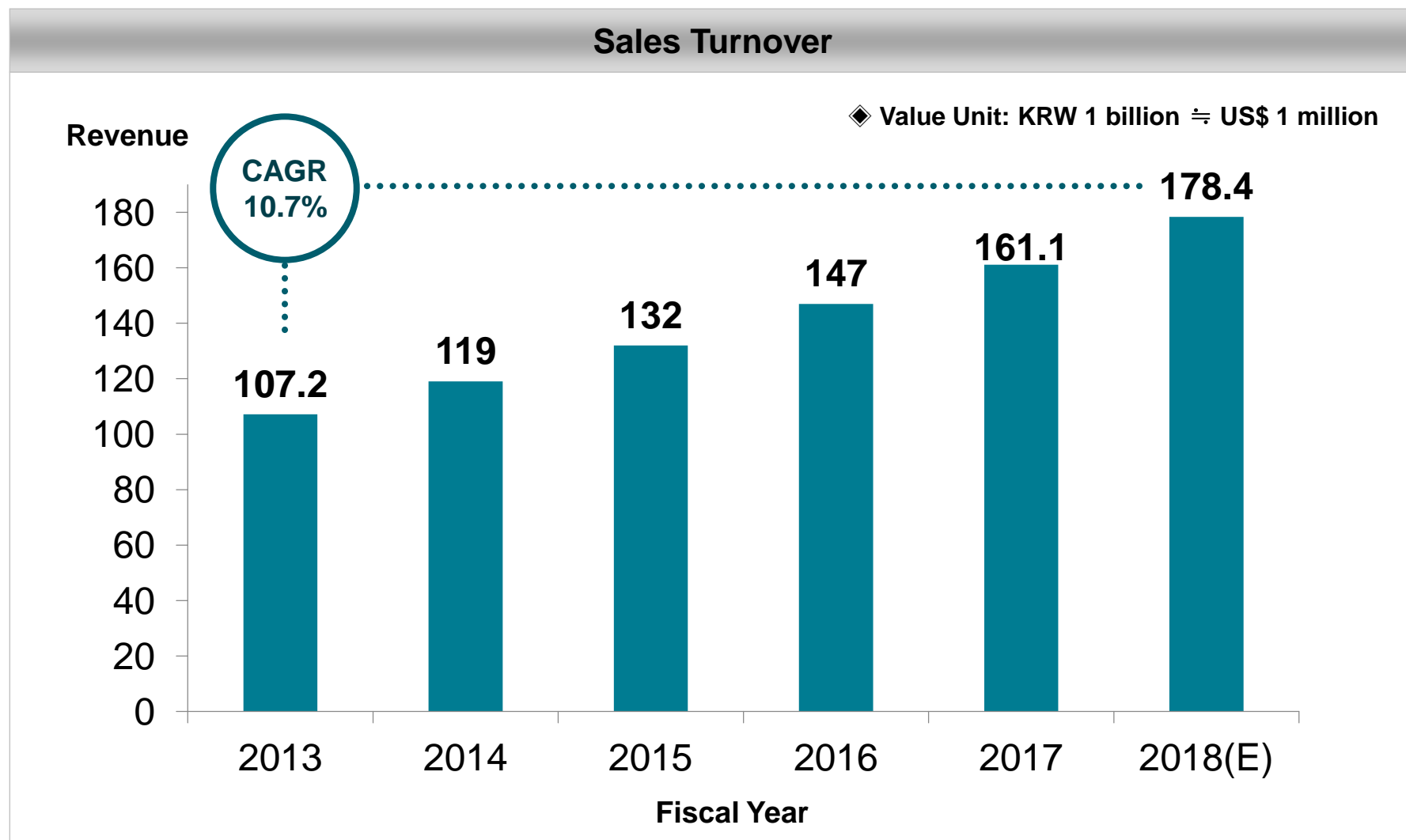
Has been inspected in connection with marketing authorisation(s) listing manufacturers located outside of the European Economic Area in accordance with Art.111(4) of Directive 2001/83/EC transposed in the following national legislation: The Human Medicines Regulations 2012 (SI 2012/1916).

CERTIFICATE OF GMP COMPLIANCE OF A MANUFACTURER

German BGV generated EU GMP Certificate on April 3rd, 2018.

	
FREIE UND HANSESTADT HAMBURG	
BEHÖRDE FÜR GESUNDHEIT UND VERBRAUCHERSCHUTZ	
Zertifikat-Nr./Certificate no: DE_HH_01_GMP_2018_0015	
Aktenzeichen/Reference Number: GS17-02.13/10,0190	
BESTÄTIGUNG DER ÜBEREINSTIMMUNG EINES HERSTELLERS MIT GMP	<u>CERTIFICATE OF GMP COMPLIANCE OF A MANUFACTURER</u>
Teil 1	Part 1
Ausgestellt nach einer Inspektion gemäß	Issued following an inspection in accordance with
• Art. 111 (5) der Richtlinie 2001/83/EG	• Art. 111 (5) of Directive 2001/83/EC
Die zuständige deutsche Überwachungsbehörde bestätigt:	The competent authority of GERMANY confirms the following:
Der Hersteller SamChunDang Pharmaceutical Co., Ltd.	The manufacturer SamChunDang Pharmaceutical Co., Ltd.
Anschrift der Betriebsstätte SamChunDang Pharmaceutical Co., Ltd. 71, Jeyakgongdan 2-gil, Hyangnam-eup, Hwaseong-si, Gyeonggi-do Korea, Republik	Site address SamChunDang Pharmaceutical Co., Ltd. 71, Jeyakgongdan 2-gil, Hyangnam-eup, Hwaseong-si, Gyeonggi-do Korea, Republic Of
• wurde im Rahmen der in der Zulassung aufgeführten Hersteller mit Sitz außerhalb des Europäischen Wirtschaftsraumes inspiziert gemäß Art. 111 (5) der Richtlinie (EG) Nr. 2001/83/EG	• has been inspected in connection with marketing authorisation(s) listing manufacturers located outside of the European Economic Area in accordance with Art. 111 (5) of Directive (EC) No 2001/83/EC

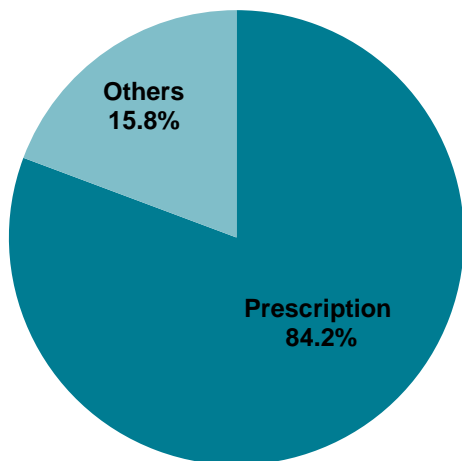
Sales Information (1/2)



Sales Information (2/2)

Sales by Business Area (FY2017)

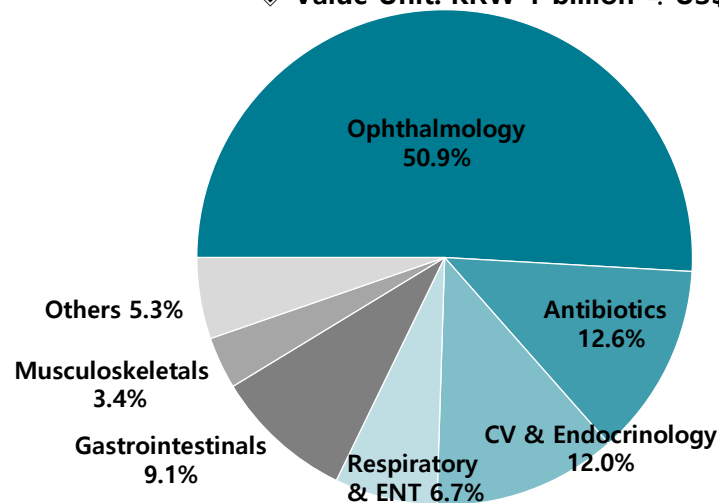
◆ Value Unit: KRW 1 billion ≡ US\$ 1 million



Business Area	Sales	Share
Prescription	135.6	84.2%
General Hospitals	11.4	7.2%
GP/Clinics	124.2	77.0%
Others	25.5	15.8%
Total	161.1	100.0%

Sales by Therapeutic Class (FY2017)

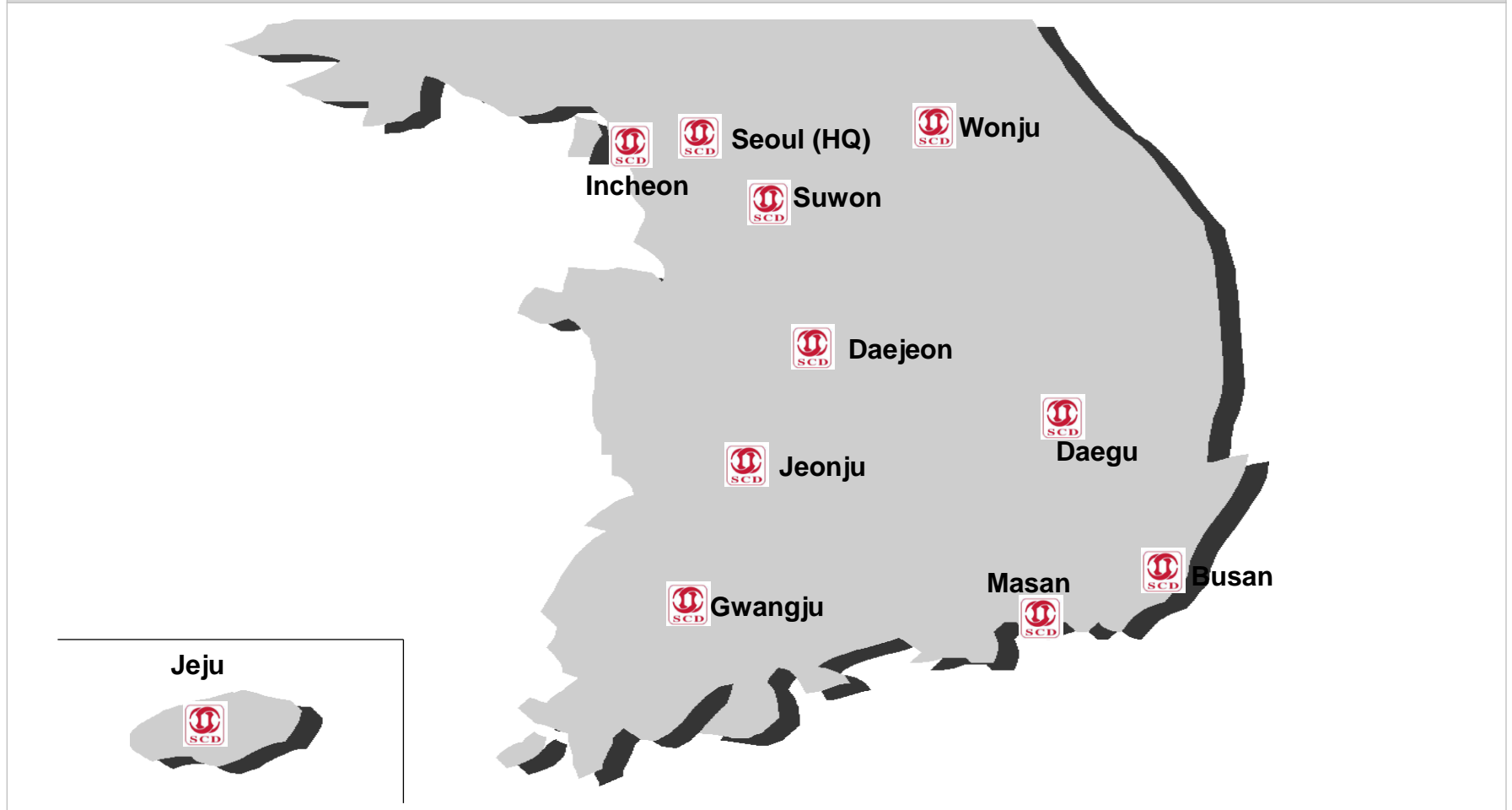
◆ Value Unit: KRW 1 billion ≡ US\$ 1 million



Therapeutic Class	Sales	Share
Ophthalmology	82.0	50.9%
Antibiotics	20.3	12.6%
CV/Endocrinology	19.4	12.0%
Respiratory/ENT	10.8	6.7%
Gastrointestinals	14.6	9.1%
Musculoskeletals	5.5	3.4%
Others	8.5	5.3%
Total	161.1	100.0%

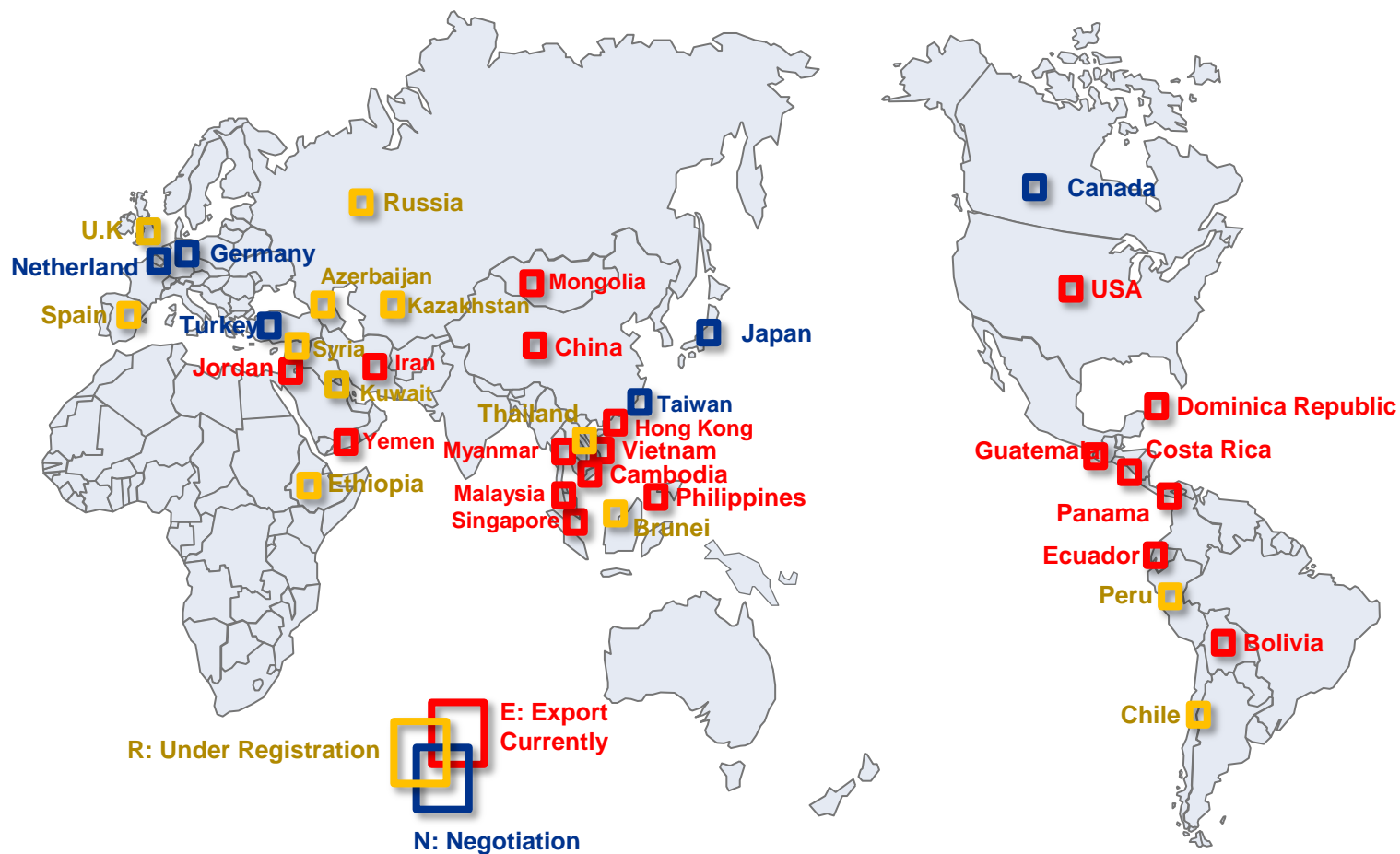
Sales Network (1/2)

11 Local Sales Branches



Sales Network (2/2)

Export Countries List



Thank you !!



***SamChunDang
Pharm. Co., Ltd.***